

Q45

Integral HP Worm Speed Reducer

0.25 - 1HP, 257 - 345 in-lbs, 17.2 - 250RPM

- Precision machined single-piece aluminum housing combines light weight with long product life
- Interchangeability with most global manufacturers



TECHNICAL DATA

Q45								
Output Speed (RPM)	Ratio	Motor Power (HP)	Output Torque (in-lbs)	Service Factor	OHL	Nom. Torque (in-lbs)	Reducer Part Number*	Gearmotor Part Number*
250	7	1	202	1.3	187	257	RQ45-0007-HSB2S-W	GQ45-0007-HSB2S-WAE3B
		0.5	101	2.5				GQ45-0007-HSB2S-WAC3B
175	10	0.75	213	1.2	202	257	RQ45-0010-HSB2S-W	GQ45-0010-HSB2S-WAD3B
		0.5	142	1.8				GQ45-0010-HSB2S-WAC3B
125	14	0.5	194	1.3	225	257	RQ45-0014-HSB2S-W	GQ45-0014-HSB2S-WAC3B
		0.25	97	2.6				GQ45-0014-HSB2S-WAA3B
83.3	21	0.5	253	1.4	247	345	RQ45-0021-HSB2S-W	GQ45-0021-HSB2S-WAC3B
		0.25	127	2.7				GQ45-0021-HSB2S-WAA3B
62.5	28	0.5	328	1.1	270	345	RQ45-0028-HSB2S-W	GQ45-0028-HSB2S-WAC3B
		0.25	164	2.1				GQ45-0028-HSB2S-WAA3B
47.3	37	0.33	277	1.2	315	345	RQ45-0037-HSB2S-W	GQ45-0037-HSB2S-WAB3B
		0.25	210	1.6				GQ45-0037-HSB2S-WAA3B
38.0	46	0.33	323	1.1	315	345	RQ45-0046-HSB2S-W	GQ45-0046-HSB2S-WAB3B
		0.25	244	1.4				GQ45-0046-HSB2S-WAA3B
29.2	60	0.25	303	1.1	315	345	RQ45-0060-HSB2S-W	GQ45-0060-HSB2S-WAA3B
25.0	70	0.25	340	0.8	405	257	RQ45-0070-HSB2S-W	GQ45-0070-HSB2S-WAA3B
17.2	102	0.25	450	<0.8	405	248	RQ45-0102-HSB2S-W	GQ45-0102-HSB2S-WAA3B

Notes: All units shown are standard configuration. Input motor, output shaft and mounting options are available.

Motor Specification:
230/460 VAC 60/50Hz,
3PH 1800 RPM
Nom. - inverter duty

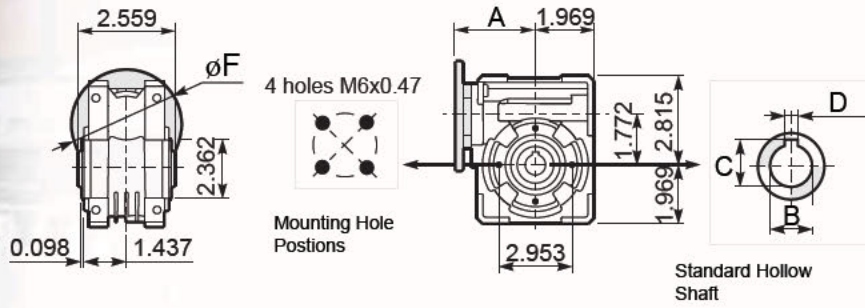
*NEMA Input Sizes:

W = 56C
X = 143/5TC
Y = 182/4TC



DRAWINGS

Basic Gearbox

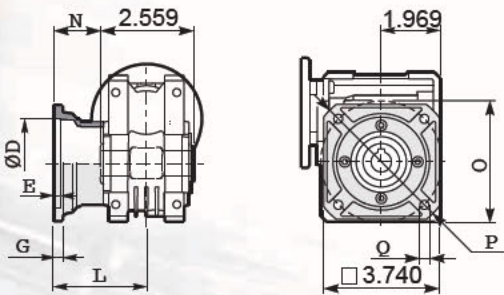


Q45	Nema Flanges	ϕF	A
	56C	6 5"	3.846"
	IEC Flanges	ϕF (mm)	A (mm)
	63 B5	140	80
	71 B5	160	77.5
	63 B14	90	80
	71 B14	105	77.5

Hollow Shaft	B	C	D
Imperial	0.750"	0.841"	0.1875"
Metric (mm)	18	20.8	6

Square Flange

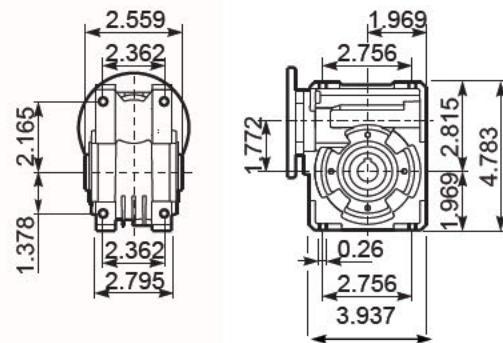
F2



type B	ϕD	E	G	L	N	O	P	Q
F2	2.3640 2.3622	0.16	0.28	2.638	1.358	2.953	4.331	0.35

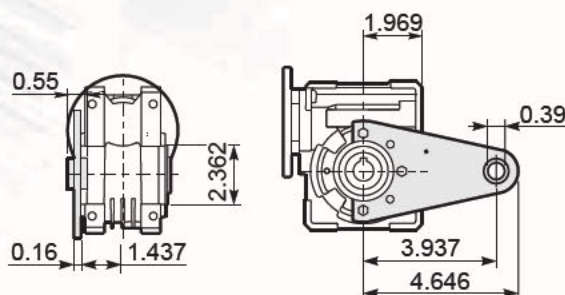
Mounting

SB



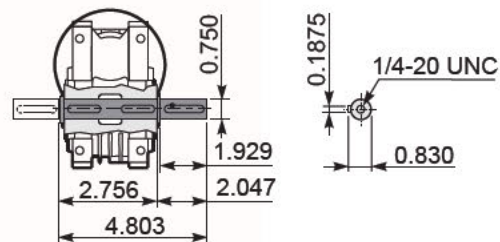
Torque Arm

TA



Output Shaft Insert

R/L



Gearbox Weight **5.1** pounds